



# Old Hayes' Solar Farm Public Engagement Event

This leaflet is to inform you of an upcoming public engagement event at **The Timber Store (National Trust), Coleshill Village and Parkland, Coleshill, SN6 7PT** on **Tuesday 17th September 2024, from 15:00-20:00**. The consultation will present the proposed Old Hayes' Solar Farm, which is currently in the pre-planning application stage.

The current proposed design is a 41 megawatt (MW) solar photovoltaic (PV) and collocated 25MW Battery Energy Storage System (BESS) project, consisting of solar PV panels, supported on a metal framework laid out in rows on an east-west configuration, so that the panels face due south, and twenty BESS units. Ancillary infrastructure would include inverters, switch room, meteorological station, internal access tracks, security measures and landscape and biodiversity enhancements.

Numerous environmental and planning surveys are currently being undertaken in advance of an anticipated planning application submission towards the end of 2024.

## Site location

The site is located approximately 500 metres northwest of Coleshill, Oxfordshire, on approximately 71 ha of land which is currently in arable agricultural use. The site is partially bordered by Snowswick Lane, to the east, and the River Cole, to the west. Planting and habitat improvement measures would be implemented to minimise any landscape and visual impacts, while also greatly increasing on site biodiversity.



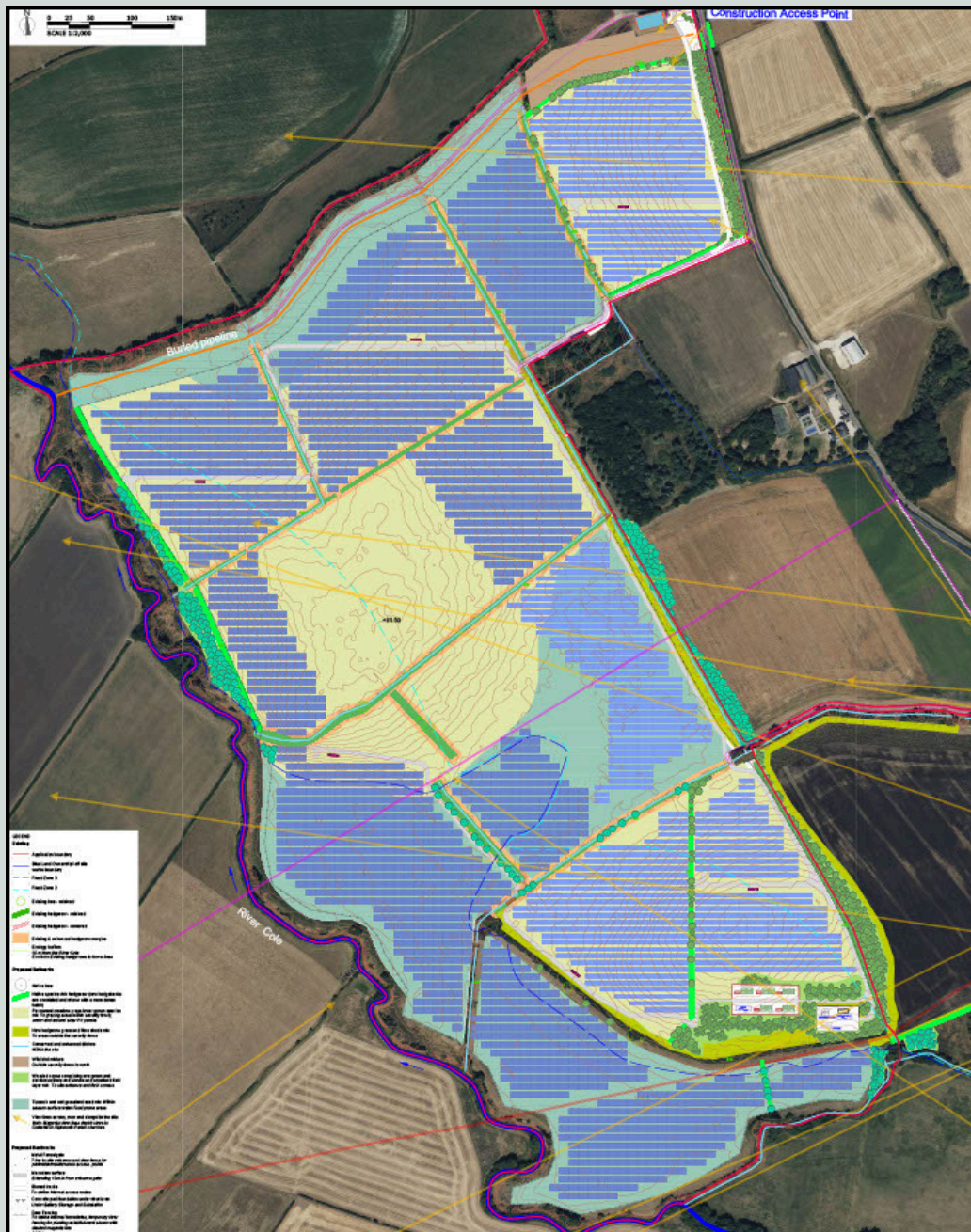
[abeieneryprojects.co.uk](http://abeieneryprojects.co.uk)

Abei Energy Group  
Origin Workspace,  
40 Berkeley Square,  
Bristol,  
BS8 1HP

# Public Engagement Event

Early community engagement is key to the way we develop our projects and we believe in open consultation with communities to inform the design process.

We now invite the wider public to come along to our public engagement event at The Timber Store (National Trust), Coleshill Village and Parkland, Coleshill, SN6 7PT, on Tuesday 17th September 2024, from 15:00-20:00. We will be displaying more detailed information about the project and you will have the opportunity to discuss the proposal with us. We are keen to hear your opinions, concerns, or if you are happy with the proposed scheme. Feedback will then be used to inform the iterative design process.



For more detailed project information, or if you'd like to submit your feedback online, please visit the project website: [abeieneryprojects.co.uk](http://abeieneryprojects.co.uk).

If you wish to contact us, please email, quoting 'Old Hayes' to: [developmentuk@abeienery.com](mailto:developmentuk@abeienery.com).



[abeieneryprojects.co.uk](http://abeieneryprojects.co.uk)

Abei Energy Group  
Origin Workspace,  
40 Berkeley Square,  
Bristol,  
BS8 1HP